

OPOS Driver Setup Guide

Revision 3.3

June 2018



Contents

Introduction.....	3
1. OPOS Driver Installation.....	4
2. OPOS Setup Utility.....	6
A. Printer.....	6
B. Cash Drawer.....	10
C. MSR.....	12
3. Uninstall OPOS Driver.....	15
4. Bluetooth Connection Setting.....	16
5. USB Connection Setting.....	18
6. Wi-Fi Connection Setting	20

Introduction

This guide describes installation instructions and settings of OPOS driver under POS system using Woosim Systems thermal printer.

To use Woosim Systems thermal printer in POS system, firstly OPOS driver should be installed on a host-POS system device and set configuration of the printer using Setup Utility program.

This document is subject to change without notice.

Woosim OPOS driver does not guarantee the normal operation for the other brand's printers.

Woosim OPOS Driver Package consists of the followings.

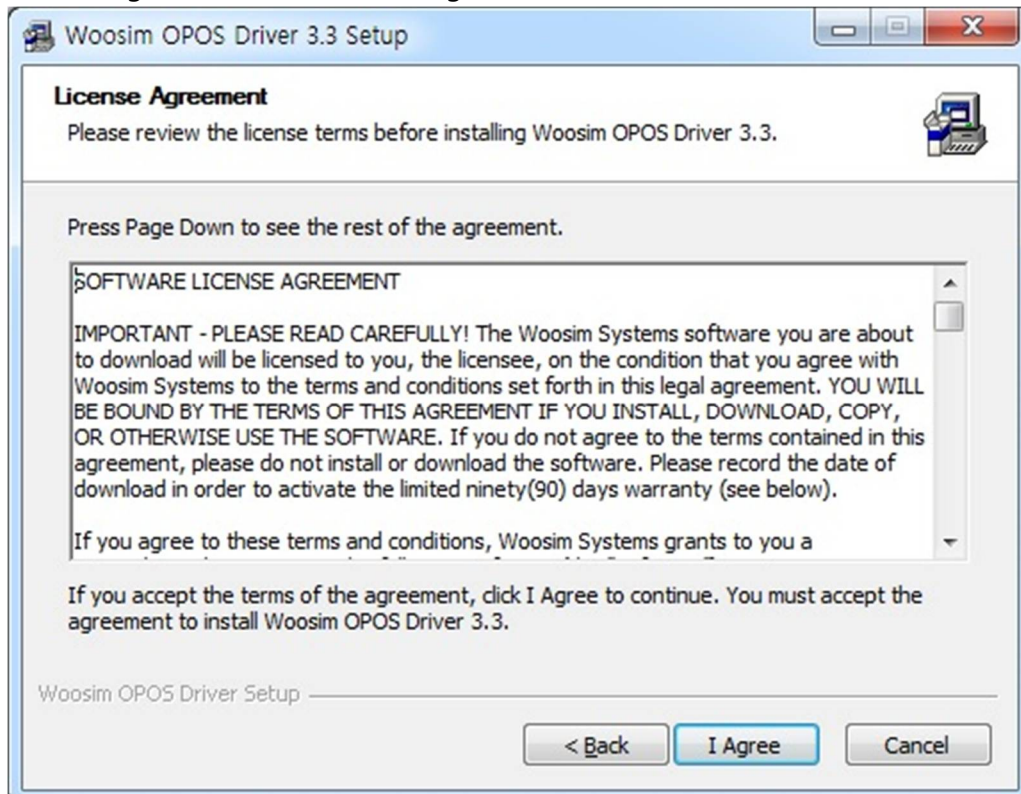
- Woosim OPOS Driver Setup.exe OPOS Driver Setup executable file
- POSSample.zip OPOS Application Sample Project Zip file
- Woosim OPOS Driver Application OPOS Application Developer's Guide document
Programmer Reference.pdf
- Woosim OPOS Driver Setup Guide.pdf OPOS Driver Setup Guide document

1. OPOS Driver Installation

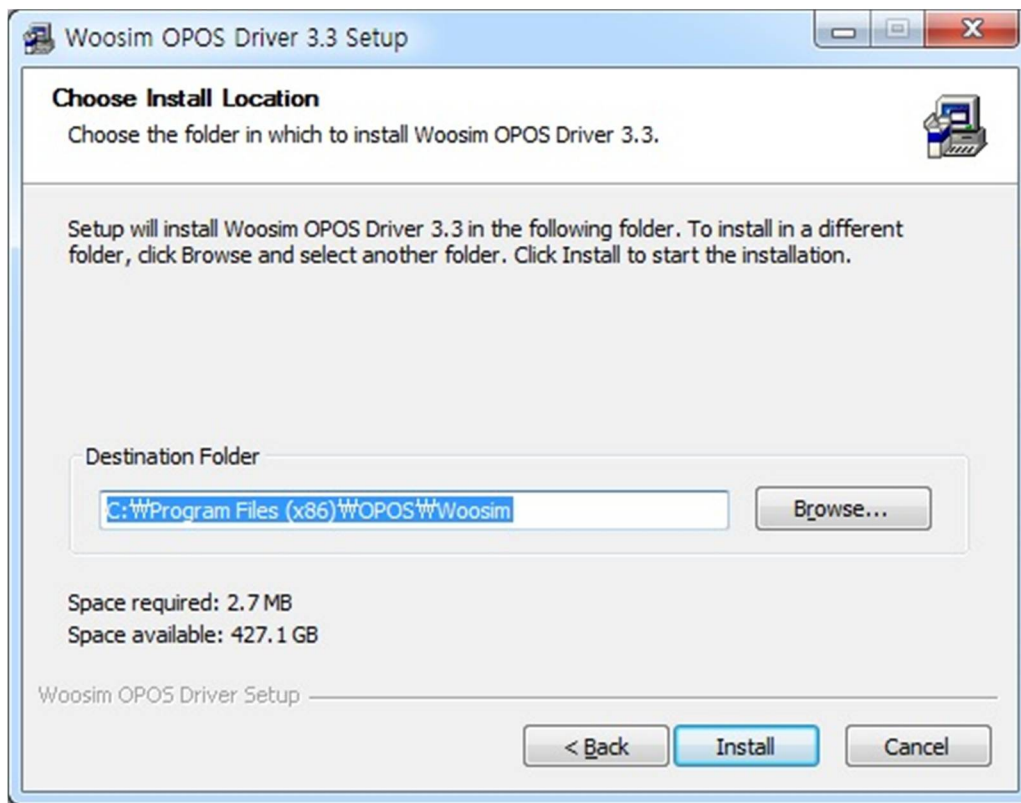
- 1) Run "Woosim OPOS Driver Setup vx.x.x.exe" file and click <Next> button.



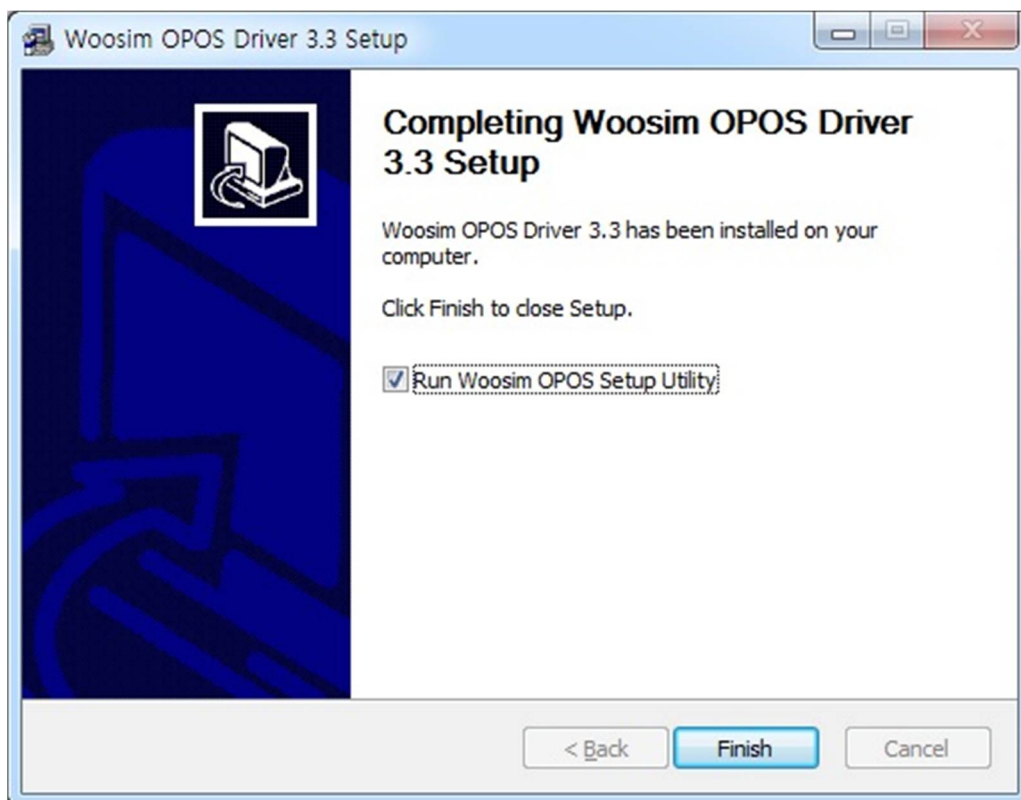
- 2) Click <I Agree> button for license agreement.



- 3) Select the destination folder and click <Install> button.



- 4) After installation successfully, click <Finish> button, and then "Woosim OPOS Setup Utility" will be run.



2. OPOS Setup Utility

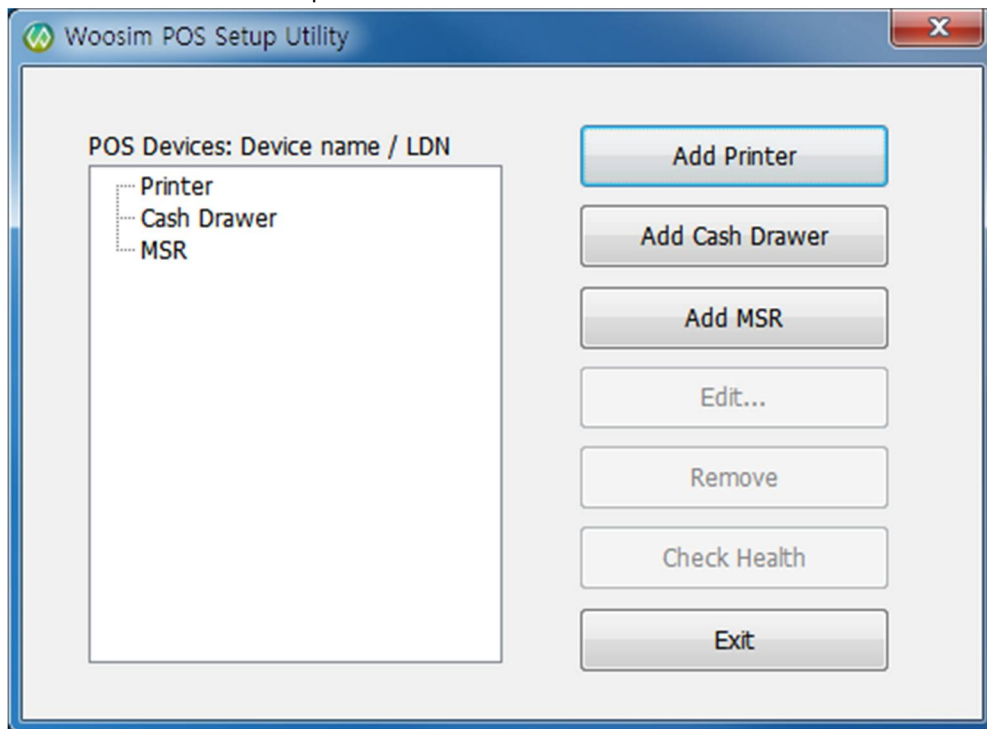
OPOS Setup Utility can perform registration or removal of the printer device on POS system, and also setting necessary values to make the device operate properly.

OPOS Setup Utility can be used right after the OPOS driver is installed, or can be run independently after driver installation.

Depending on the system environment, setting values by OPOS Setup Utility could not be reflected properly. In this case it is recommended to run OPOS Setup Utility with administrator authority.

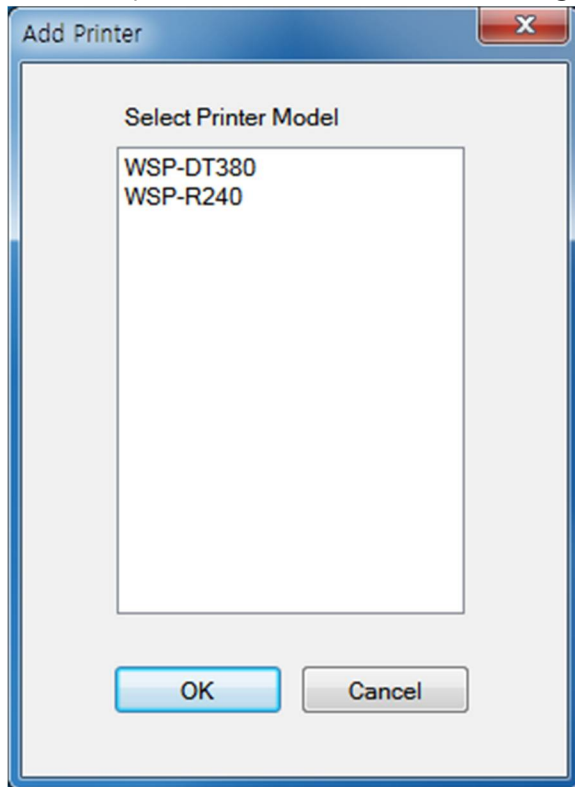
A. Printer

- 1) Run "Woosim OPOS Setup" and click <Add Printer> button.



- 2) Select printer which will be installed on POS system, and click <OK> button.

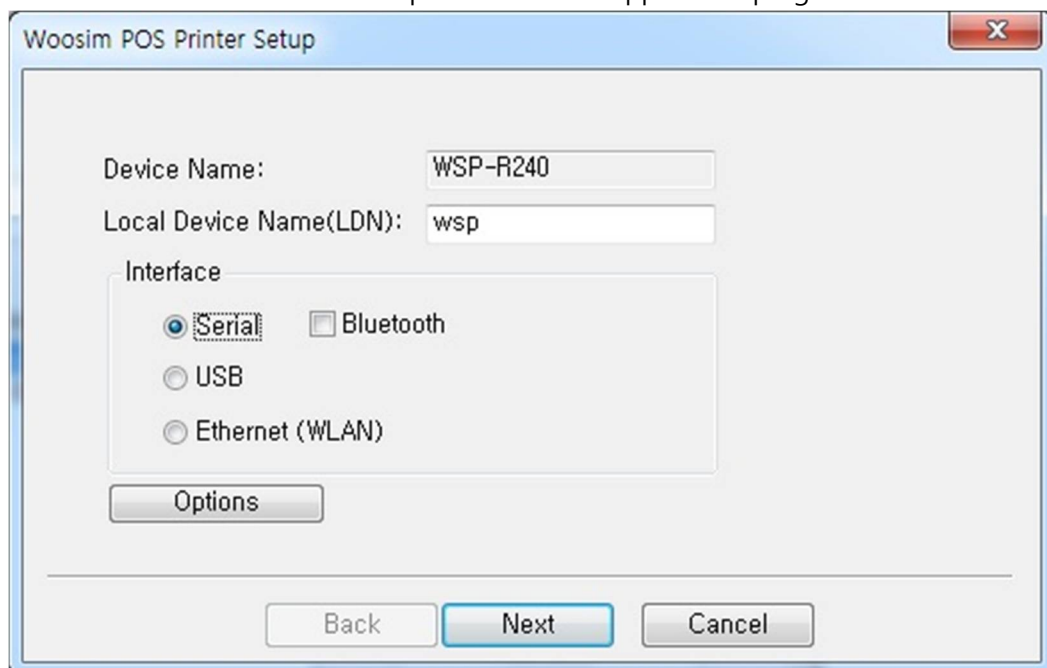
The list of printer models shown on the dialog can be different from the below image.



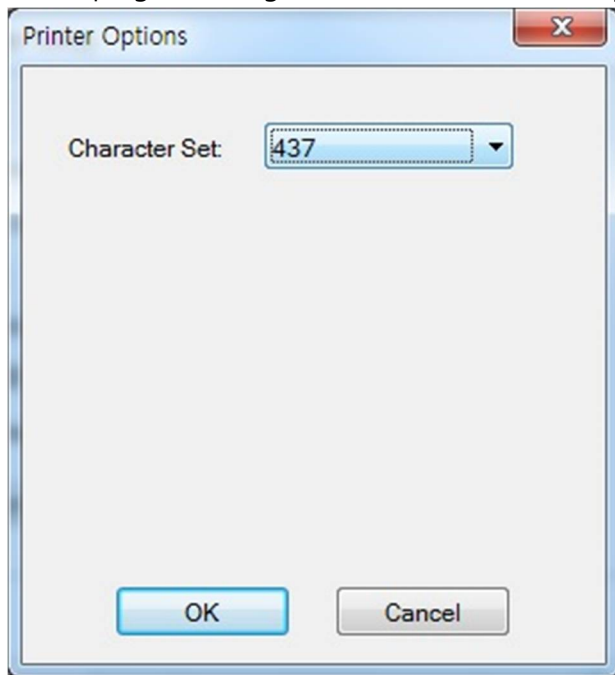
- 3) Enter Local Device Name(LDN) for the selected printer and select interface. Click <Next> button.

This guide describes serial interface setting. For other interfaces, refer to other sections in this document.

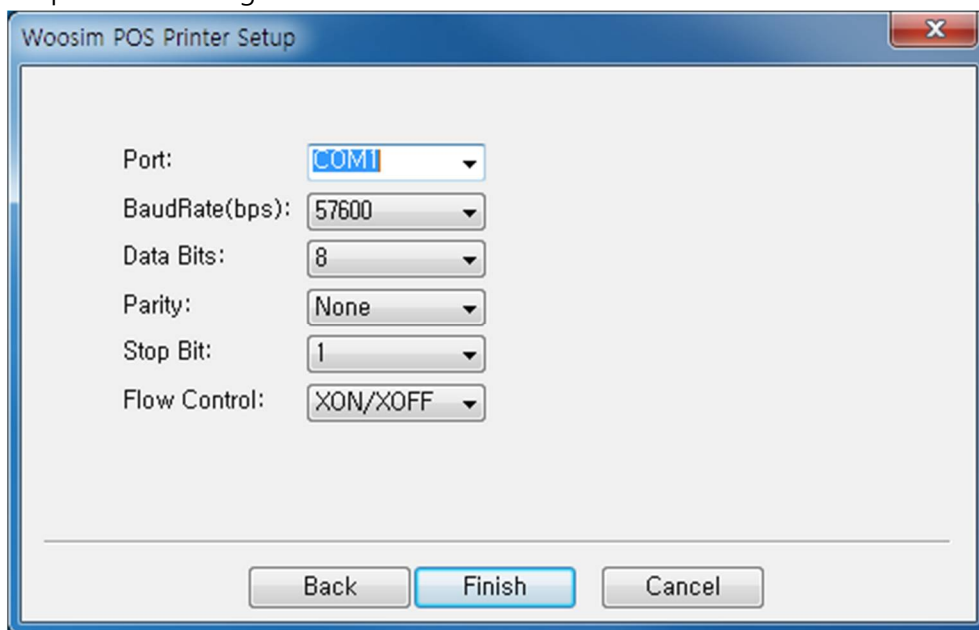
LDN value will be used to select printer in OPOS application program.



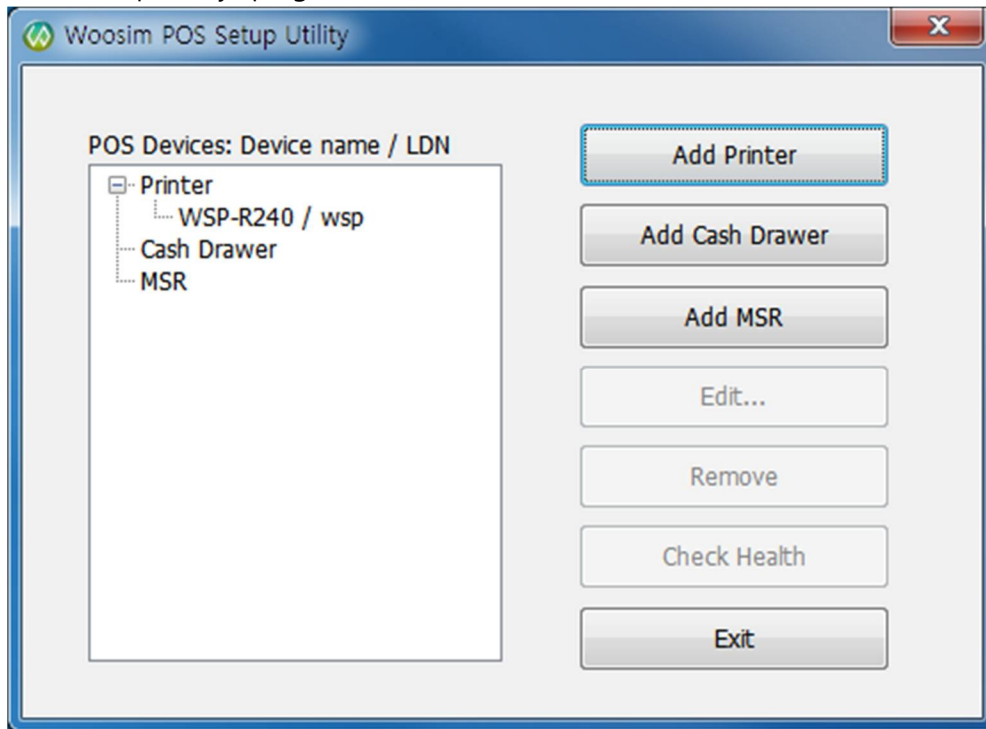
- 4) Initial character set value can be selected by <Options> button.
The character set value means Windows code page.
If POS program changes the value, it will be set by the program actions.



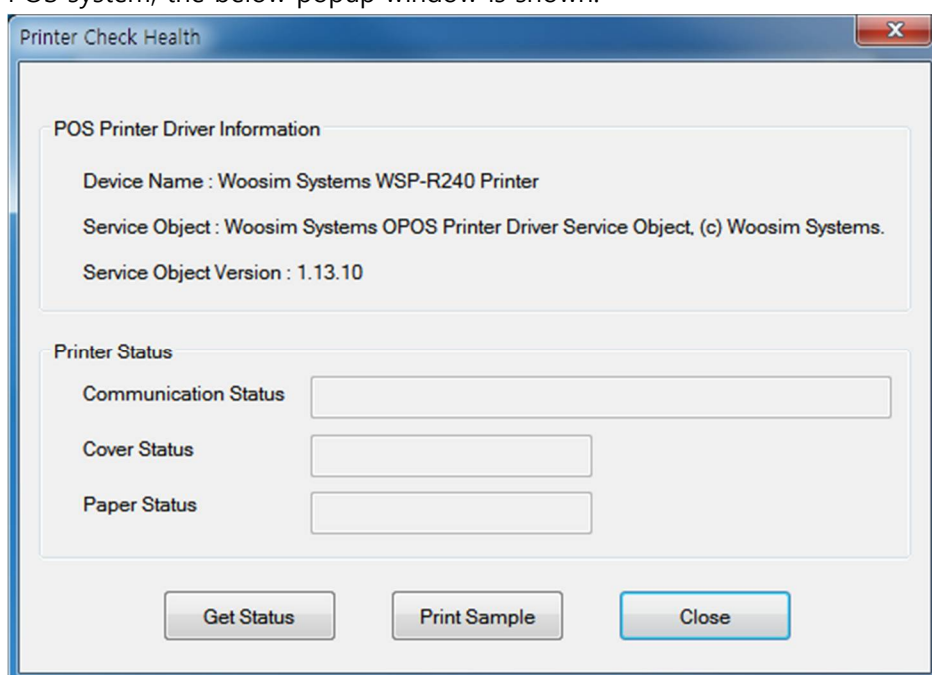
- 5) Assign setting values for the selected interface, and click <Finish> button.
Proper setting values for the printer which is connected to the host-POS system can be checked from the self-test result of the printer. Assigned values should be same as settings of the printer excluding "Port" item.



- 6) The selected printer is registered on the POS system and can be used.
To change configuration values, select the printer and click <Edit...> button.
To uninstall a printer from the POS system, click <Remove> button.
If there are no more configurations to be changed, click <Exit> button to finish the "Woosim OPOS Setup Utility" program.



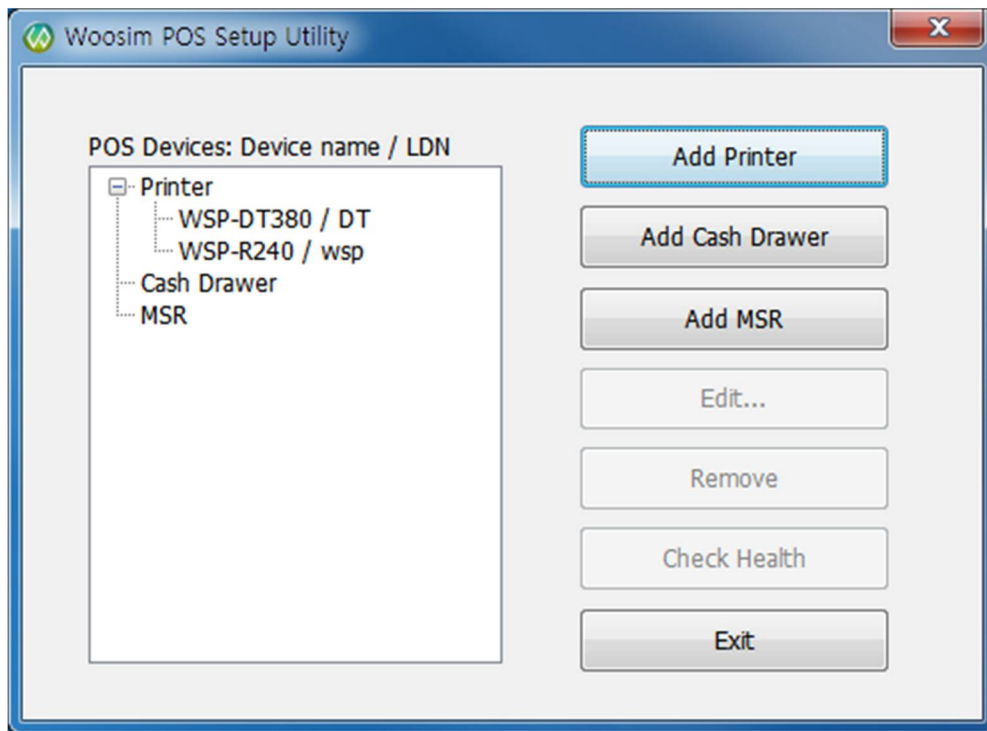
- 7) If the printer is connected to the POS system and powered on, the operating status can be checked by clicking <Check Health> button. If the printer driver is installed correctly on the POS system, the below popup window is shown.



B. Cash Drawer

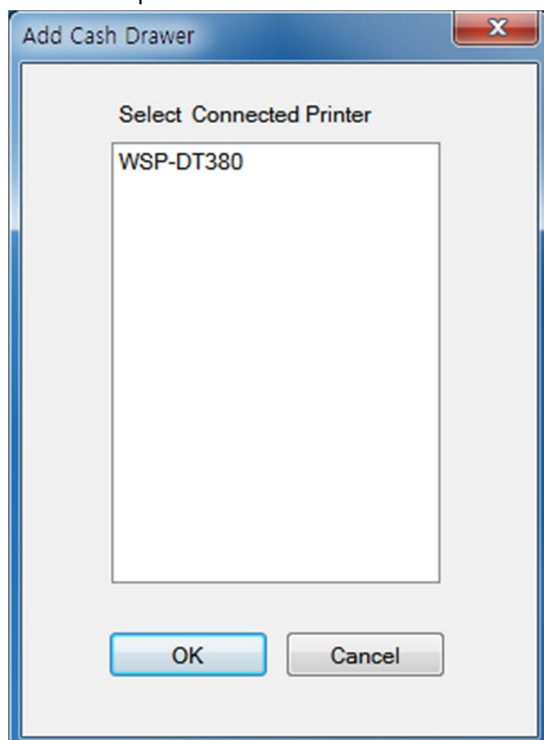
- 1) Run "Woosim OPOS Setup" and click <Add Cash Drawer> button.

To install the Cash Drawer driver the driver of printer which is equipped with cash drawer port must be installed in advance.



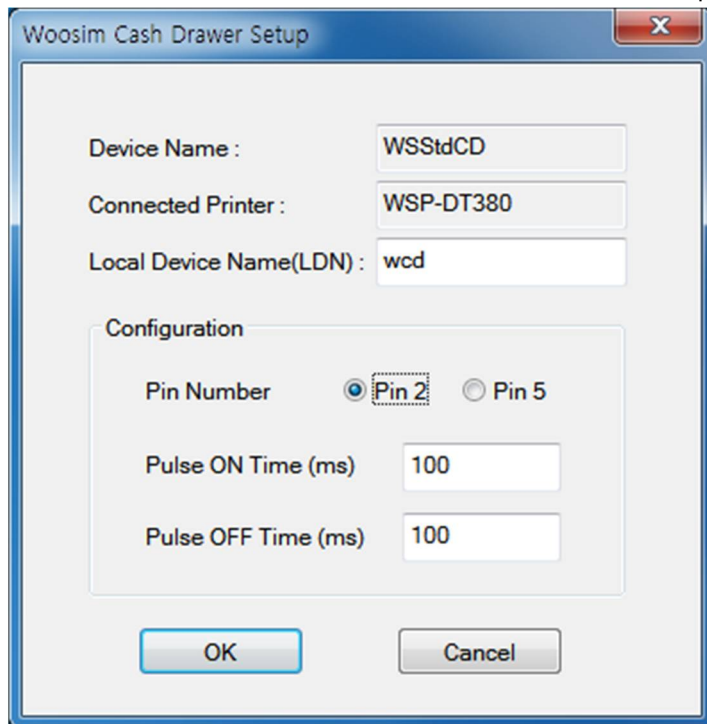
- 2) Select printer which will be connected to POS printer, and click <OK> button.

The list of printer models shown on the dialog can be different from the below image.

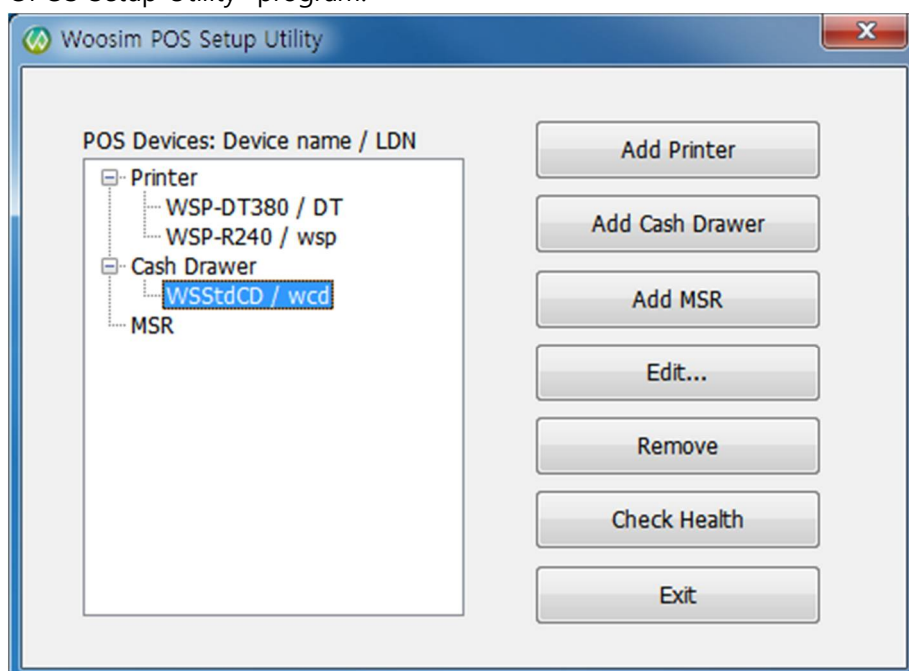


- 3) Enter Local Device Name(LDN) for the selected Cash Drawer and select Configurations. Click <OK> button.

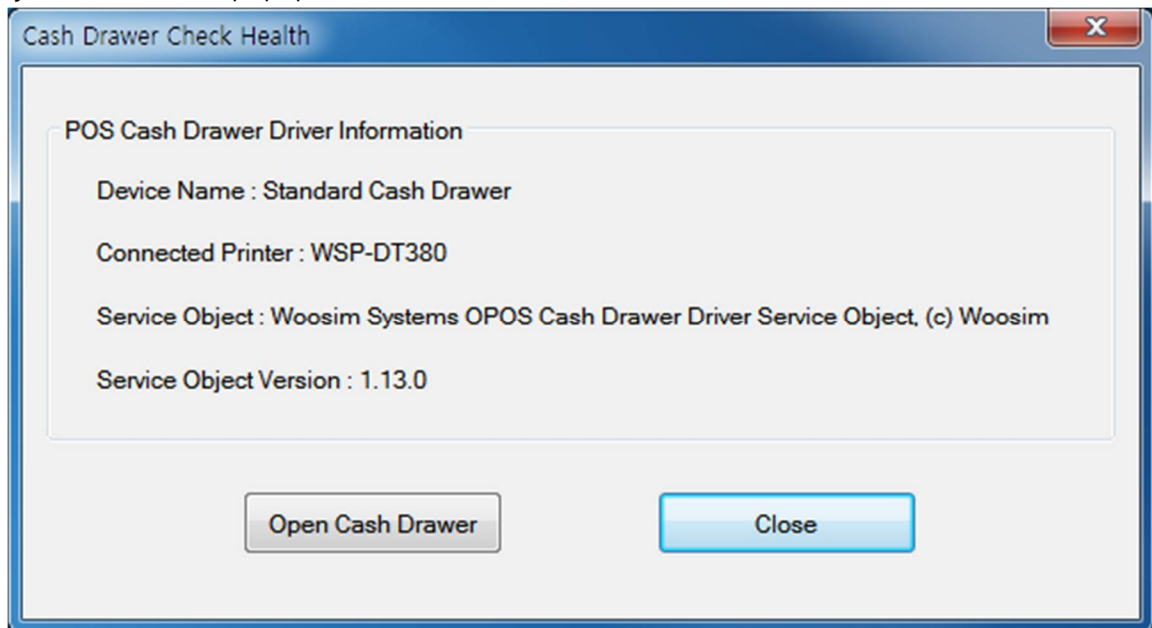
LDN value will be used to select Cash Drawer in OPOS application program.



- 4) The Cash Drawer is registered on the POS system and can be used.
 To change configuration values, select the Cash Drawer and click <Edit...> button.
 To uninstall a Cash Drawer from the POS system, click <Remove> button.
 If there are no more configurations to be changed, click <Exit> button to finish the "Woosim OPOS Setup Utility" program.

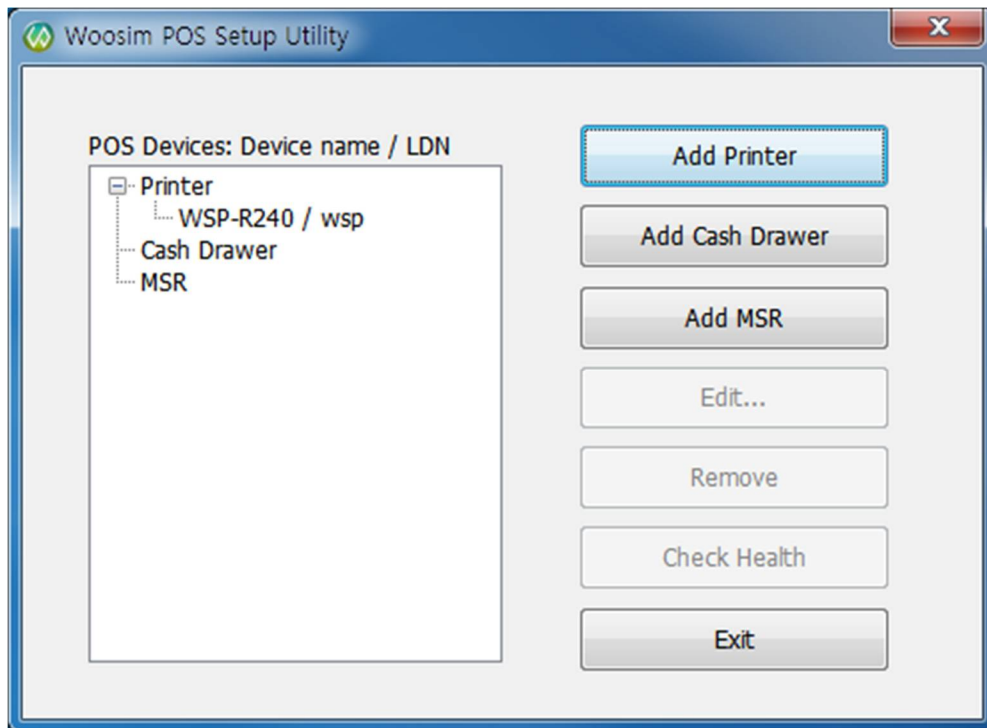


- 5) If the Cash Drawer is connected to the POS system, the driver information can be checked by clicking <Check Health> button. If the Cash Drawer driver is installed correctly on the POS system, the below popup window is shown.



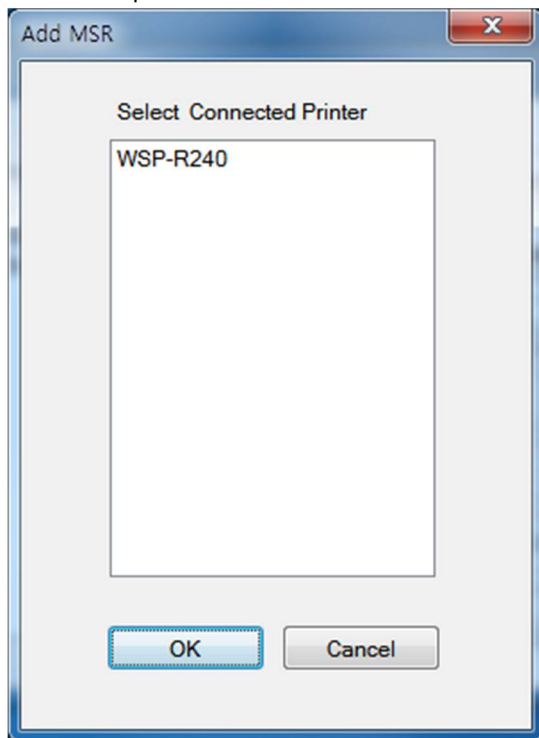
C. MSR

- 1) Run "Woosim OPOS Setup" and click <Add MSR> button.
To install the MSR driver the driver of printer which is equipped with MSR must be installed in advance.



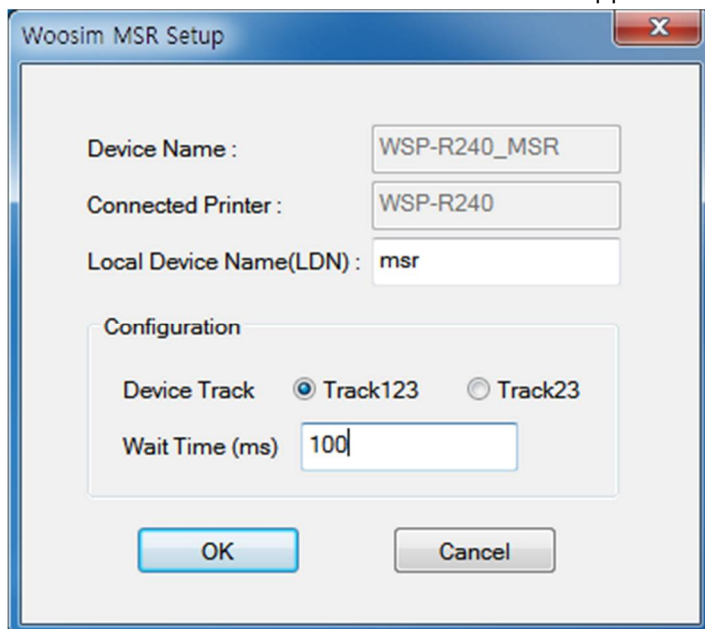
- 2) Select printer which will be connected to POS printer, and click <OK> button.

The list of printer models shown on the dialog can be different from the below image.



- 3) Enter Local Device Name(LDN) for the selected MSR and select Configurations. Click <OK> button.

LDN value will be used to select MSR in OPOS application program.

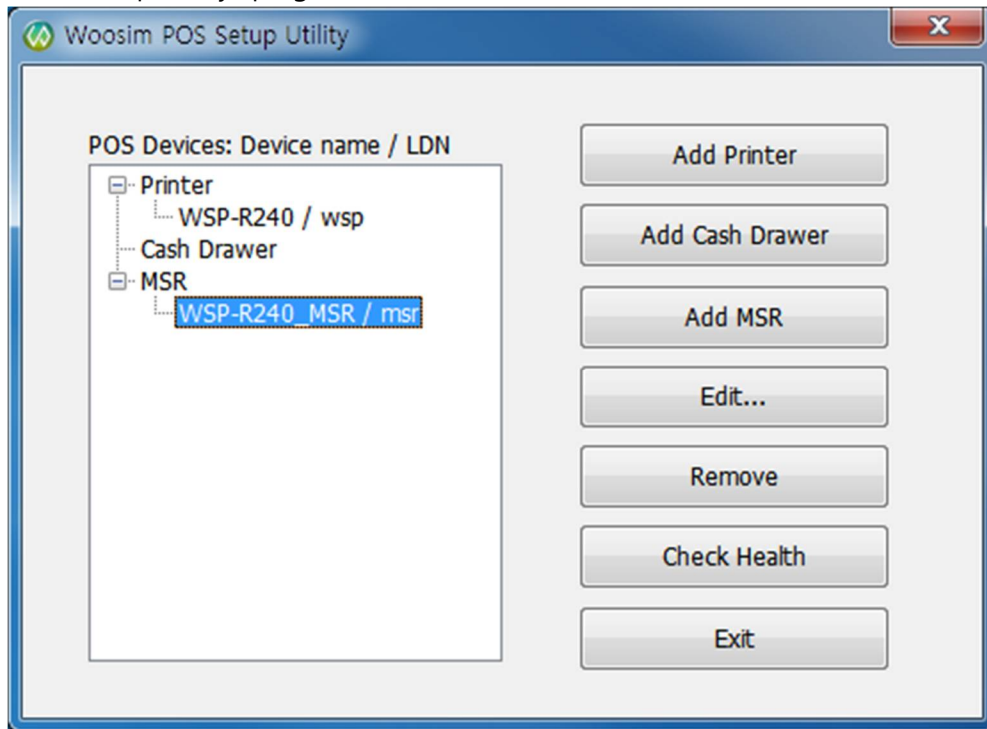


- 4) The MSR is registered on the POS system and can be used.

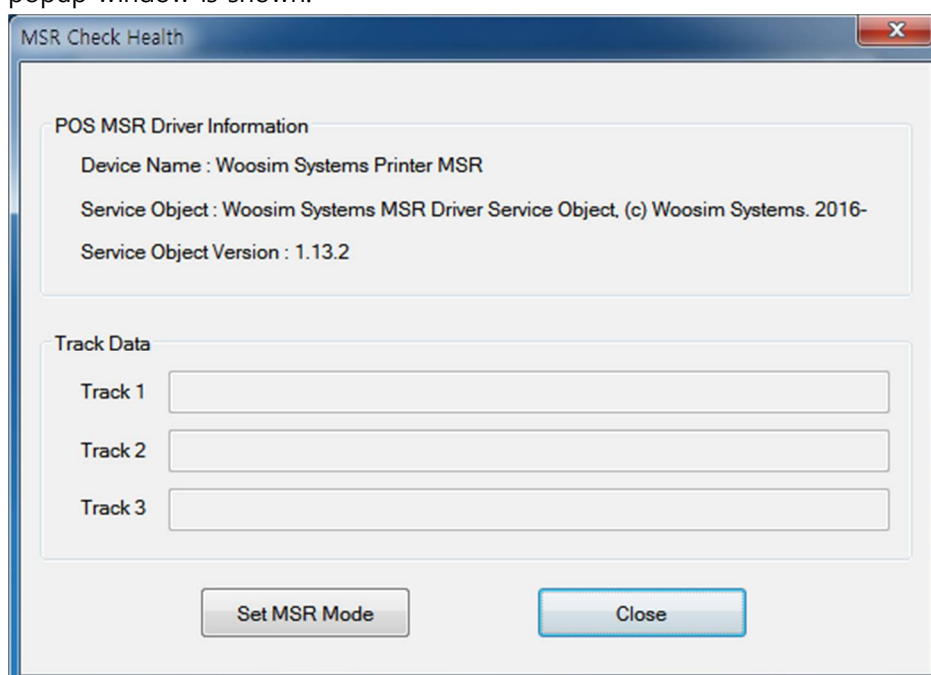
To change configuration values, select the MSR and click <Edit...> button.

To uninstall an MSR from the POS system, click <Remove> button.

If there are no more configurations to be changed, click <Exit> button to finish the "Woosim OPOS Setup Utility" program.

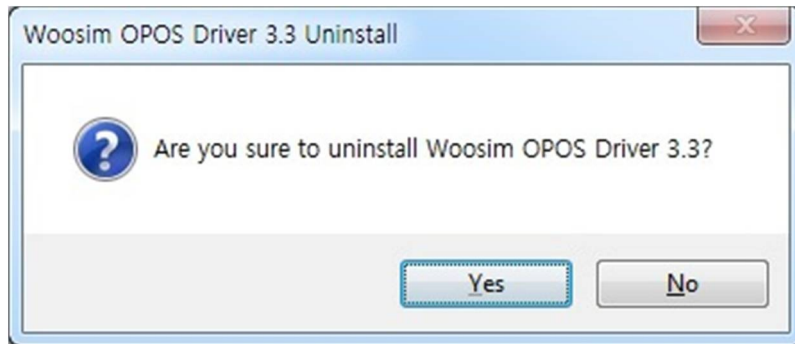


- 5) If the MSR is connected to the POS system, the driver information can be checked by clicking <Check Health> button. If the MSR driver is installed correctly on the POS system, the below popup window is shown.



3. Uninstall OPOS Driver

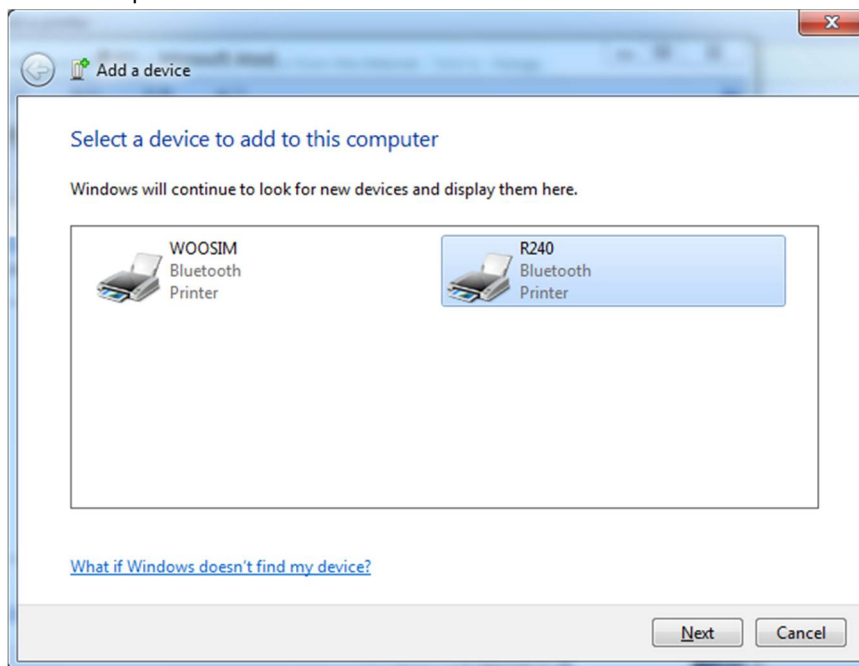
- 1) To remove OPOS driver from the POS system, click "Uninstall OPOS Driver" menu in the following location.
Start > All Programs > Woosim OPOS > Uninstall OPOS Driver
- 2) Click <Yes> button on the message popup to confirm the uninstallation of the Woosim OPOS Driver.



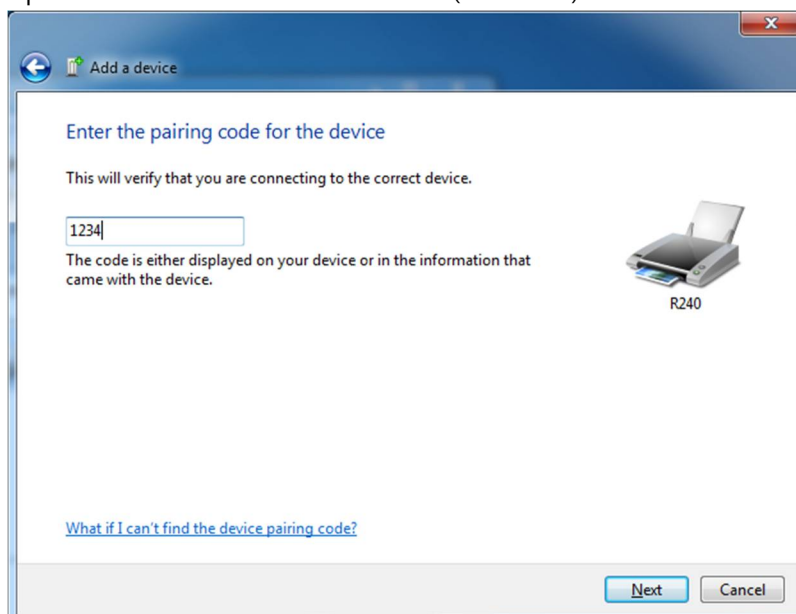
4. Bluetooth Connection Setting

This section describes the way to connect POS system to POS Printer through Bluetooth. The printer should be powered on and set Bluetooth mode.

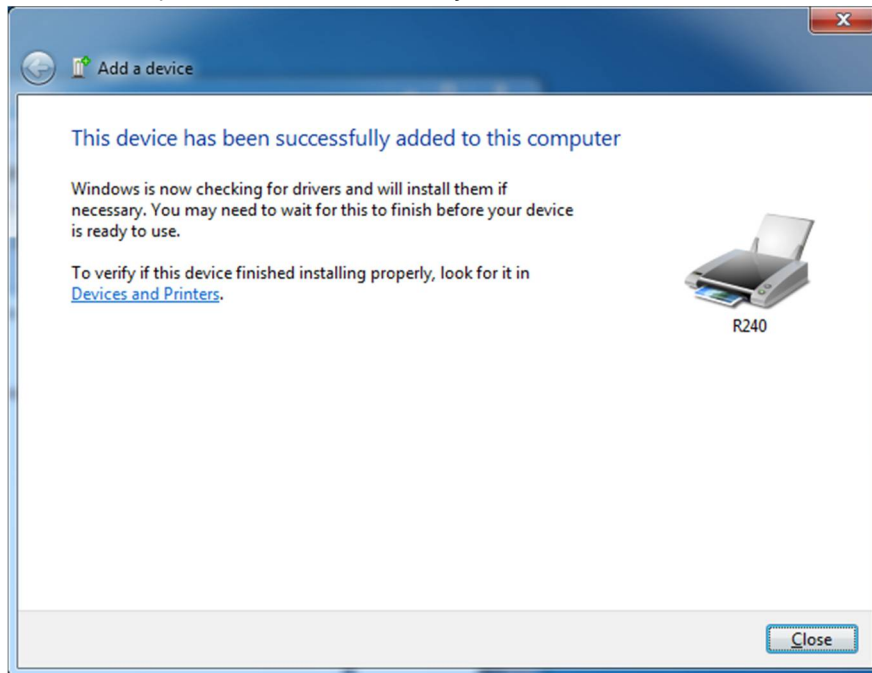
- 1) Click "Start > Devices and printers".
- 2) Click "Add a device".
- 3) Select the printer to be connected and click <Next> button.



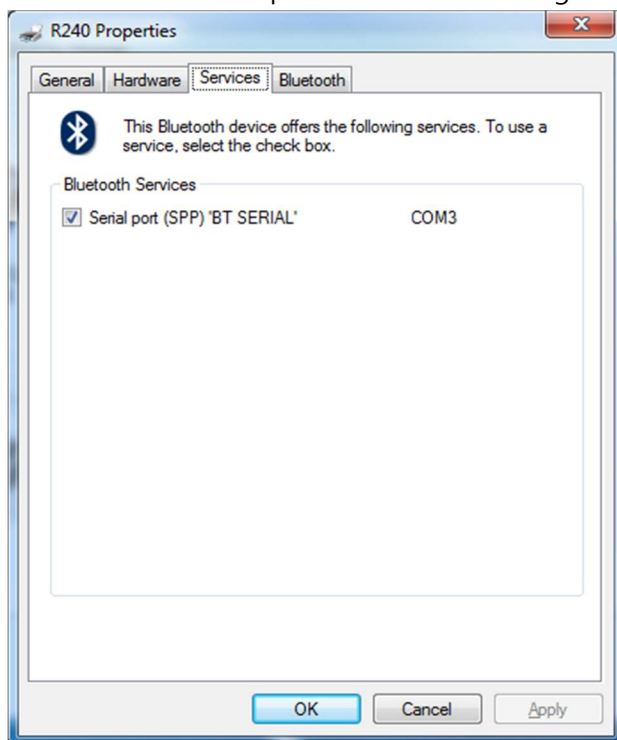
- 4) Input the Bluetooth connection code(PIN code) and click <Next> button.



- 5) Check if the printer is added to the system and click <Close> button.



- 6) Select the added printer in the "Devices and printers" window, and click the mouse right button and select "Properties"
- 7) Move to <Service> tap and check the SPP registration and the allocated COM port number.



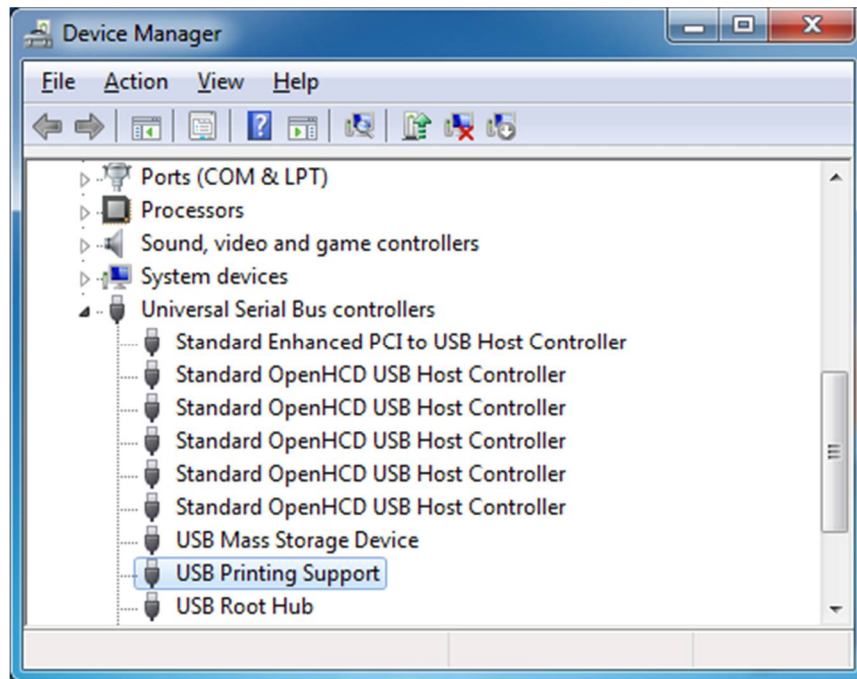
- 8) For further setup, refer to the Serial Interface connection case.

5. USB Connection Setting

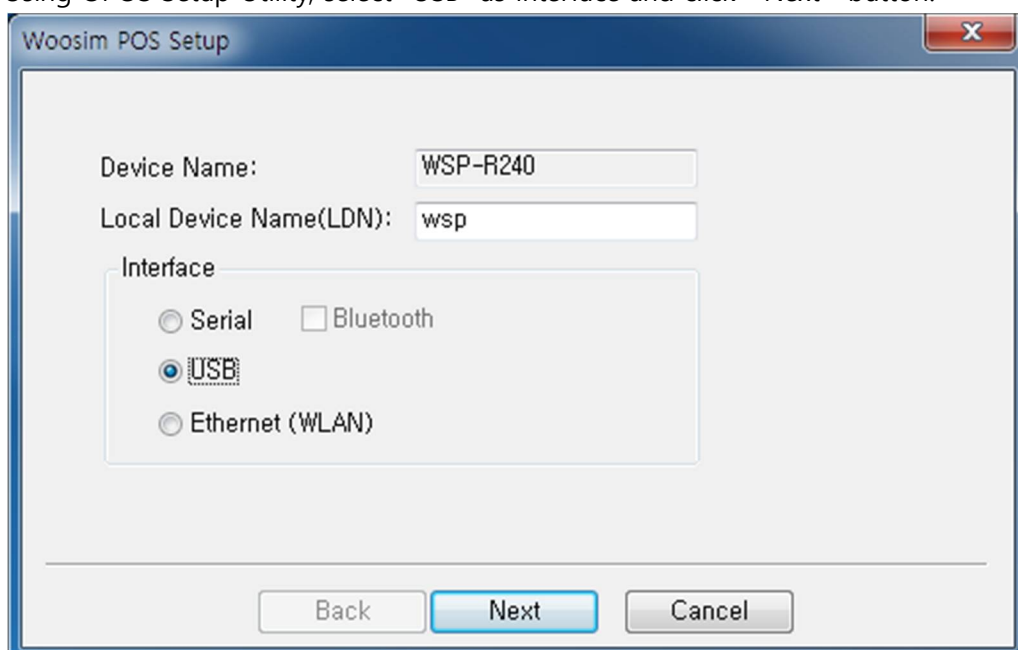
This section describes the way to connect POS system to POS Printer through USB.

The printer should be powered on and be connected with USB cable.

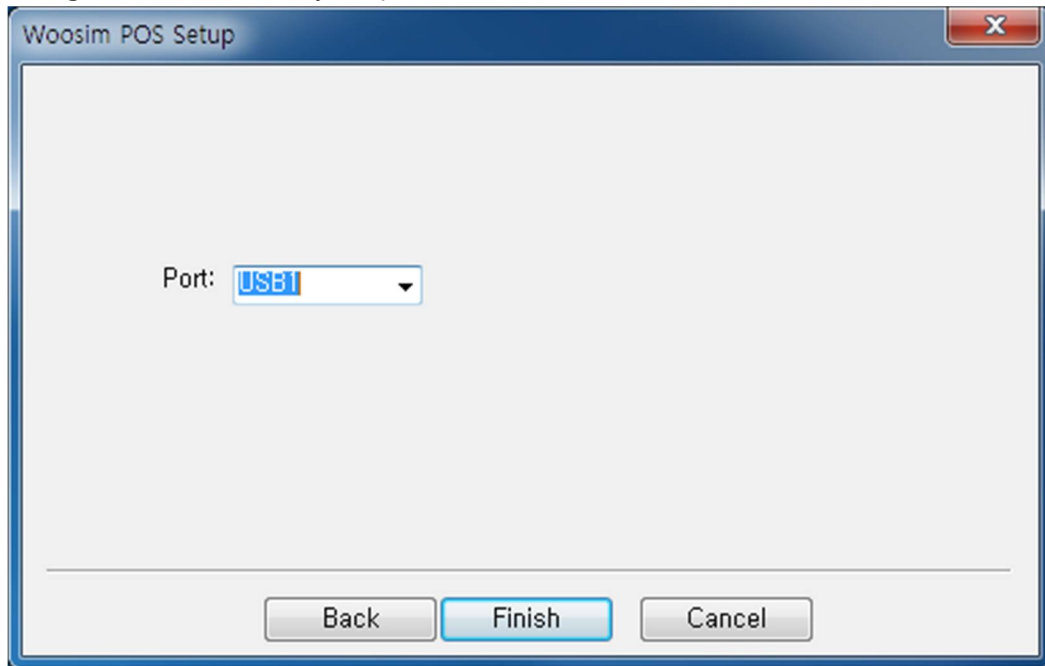
At the first connection between the Printer and the host POS system, the system recognizes the printer and installs the USB device driver automatically. If the USB device driver is installed properly, "USB Printing Support" is listed in the Universal Serial Bus Controllers in the Device Manager window.



- 1) Using OPOS Setup Utility, select "USB" as Interface and click <Next> button.



- 2) Configure the Port. Usually keep the default value "USB1"



- 3) For further setup, refer to the Serial Interface connection case.

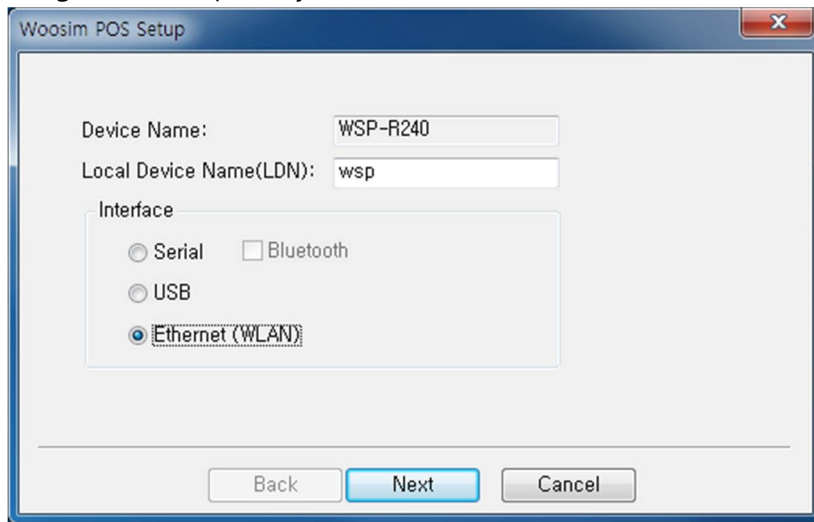
6. Wi-Fi Connection Setting

This section describes the way to connect POS system to POS Printer through Wi-Fi.

The printer should be powered on and set WLAN mode.

For printer's Wi-Fi setup, refer to the "Woosim WLAN Device Setting Guide"

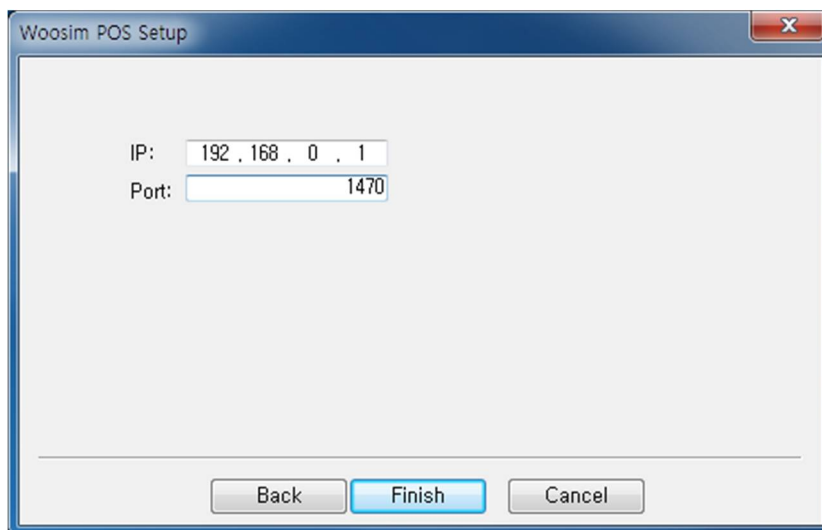
- 1) Connect the POS system device to the same network where the printer is connected.
- 2) Using OPOS Setup Utility, select "Ethernet (WLAN)" as Interface and click <Next> button.



- 3) Input the IP address and Port number of the printer.

The IP address can be checked on LCD panel if the printer has an LCD, or can be done by self-test result.

The Port number of the printer should be input the value during the printer's Wi-Fi setting. The default value is 1470.



- 4) For further setup, refer to the Serial Interface connection case.